

Large capacity combined with high accuracy from Radar's RAL series of Vertical Turning Lathes

BROADBENT STANLEY through its strategic agency agreement with Radar Industrial can supply, support and service its full range of CNC VTLs to customers throughout the UK and Ireland, Egypt, Africa and the Middle East.

Three machines – six variants – one powerful solution for your large capacity turning (and milling, drilling and grinding) requirements.

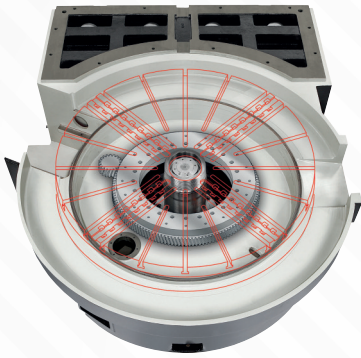
The Radar RAL series of VTLs deliver uncompromising machining capability for turning, milling, drilling and grinding large components. Through use of advanced design concepts Radar has created a series of machines that deliver efficient and accurate machining that takes the VTL to the next level.

A partnership for productivity....

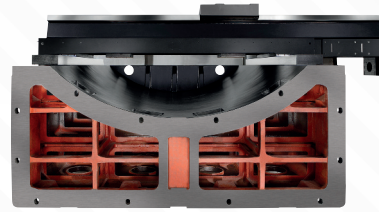
With the strategic agency agreement with Broadbent Stanley, customers can now call on almost 150 years of experience in the machine tool sector and draw on Broadbent Stanley's extensive applications knowledge and high levels of customer service.



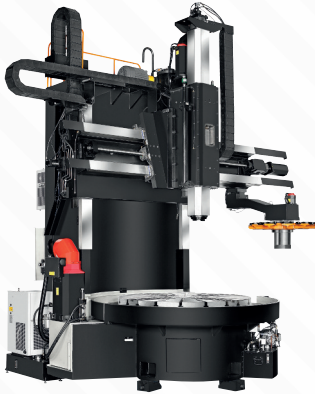
RAL FEATURES AND BENEFITS:



FEATURE:
Thrust and tapered roller bearing design
BENEFIT:
Generates precision and performance under heavy loads



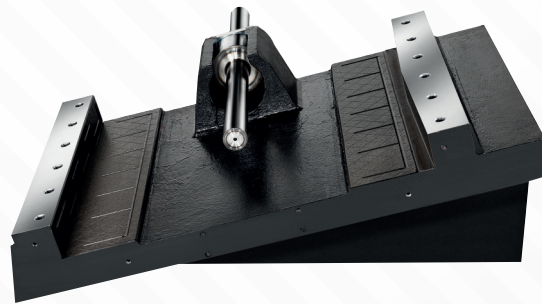
FEATURE:
One-piece Meehanite cast column
BENEFIT:
Creates a highly stable and rigid machining platform



FEATURE:
Patented octagon RAM design
BENEFIT:
Gives improved control of thermal expansion and excellent damping properties



FEATURE:
12 position tool-changer (18 position on M-models with nine powered tool positions)
BENEFIT:
Fast and precise toolchange, with multiple tool options



FEATURE:
15 degree slant bed (RAL 16 and RAL 20)
BENEFIT:
Reduced overhang improves machine rigidity

Selected specifications:

Machine capacity (in MM)	RAL-12	RAL-12M	RAL-16	RAL-16M	RAL-20	RAL-20M
Table diameter	1250		1600		2000	
Max. Swing	1600		2000		2500	
Max. Turning Diameter	1500		1900		2400	
Max. Turning height	1250		1600 mm			
Max. Workpiece weigh (KG)	6000		10000		13000	
Spindle and table						
Table speed (2 steps)	1 - 120 and 1 - 300 revs/minv		1 - 70 and 1 -250 revs/min		1 - 50 and 1 - 200 revs/min	
Max. torque of table	10655 Nm		18790 Nm		23270 Nm	
Spindle power	AC 30/37 kW		AC 37/45 kW			
Live spindle power	AC 7.5/11 kW					
Live spindle speed	24 - 2400 revs/min					
X and Z axis servo motor			6 kW			
C-axis servo motor	7 kW		7 kW		7 kW	
Travel and Rapid						
X-axis travel	(-)200 to (+)950 mm		(-)200 to (+)1125 mm		(-)250 to (+)1380 mm	
Z-axis travel	900 mm		1000 mm			
Crossrail travel			800 mm			
X-axis rapid traverse			12 m/min			
Z-axis rapid traverse			10 m/min			